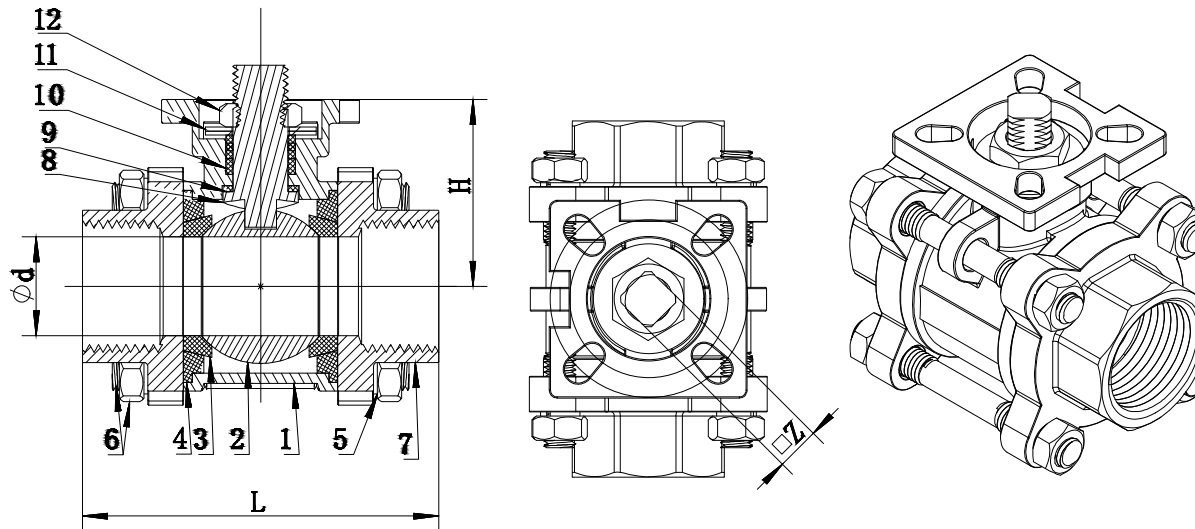


Technical Requirements

1. Design and Manufacture to API608
2. End to end dimension to DIN3202-M3
3. Thread end dimension to ASME B1.20.1, ISO 7-1, ISO228
4. Inspection and Test to API598
5. ISO5211 Direct mounting pad



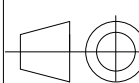
Size	DN	φd	L	H	φZ	ISO 5211
1/2"	DN15	15	75	39	9	F03/F04
3/4"	DN20	20	80	45	9	F03/F04
1"	DN25	25	90	54	11	F04/F05
1-1/4"	DN32	32	110	60	11	F04/F05
1-1/2"	DN40	38	120	70	14	F05/F07
2"	DN50	49	140	80	14	F05/F07
2-1/2"	DN65	65	185	97	17	F07/F10
3"	DN80	78	205	105	17	F07/F10
4"	DN100	100	240	120	19	F07/F10

12	NUT	SS304
11	DISC SPRING	SS304
10	PACKING	PTFE
9	STEM WASHER	PTFE
8	STEM	A276-304/316
7	CAP	A351 CF8/CF8M
6	BOLT/NUT	A193-B8/B8M A194-8/B8
5	SPRING WASHER	SS304
4	GASKET	PTFE
3	SEAT	PTFE
2	BALL	A351 CF8/CF8M
1	BODY	A351 CF8/CF8M
NO.	PART NAME	MATERIAL

Jakiflow Corporation
No.15, lane 582, Zhongcao Road
Changhua, TaiWan 500 p.c

Phone +886 4751 9878
+886 4751 7558
FAX +886 4751 9585

Website <http://www.jakiflow.com>
Email sales@jakiflow.com



MATERIAL
UNIT mm

JAKI

3PC SCREWED BALL VALVE
FIG. 7313M 1000WOG

DRN

CHK

Wang Na

APP

Kevin

SCALE

DATE

2023/12/11

REV

7313M-20231211A